

Johnson City Metropolitan Transportation Planning Organization

2050 Metropolitan Transportation Plan Update

Executive Board Meeting #1 | January 27, 2022



Agenda

- Overview of MTP Update
- Draft Public and Stakeholder Engagement
- Draft Population and Employment Control Totals
- Draft Goals, Objectives and Performance Measures
- Next Steps

Overview of MTP Update

- **Project Background**

- Update to the Johnson City MTPO MTP
- Current plan (Johnson MTPO 2045 MTP) adopted February 22, 2018

- **Project Goals**

- Update the MTP according to federal requirements
- Work closely with the City of Johnson City, the Johnson City MTPO, public transit providers and stakeholders
- Follow procedures in the Johnson City MTPO Public Participation Plan
- Adopt 2050 MTP by February 22, 2023

Overview of MTP Update

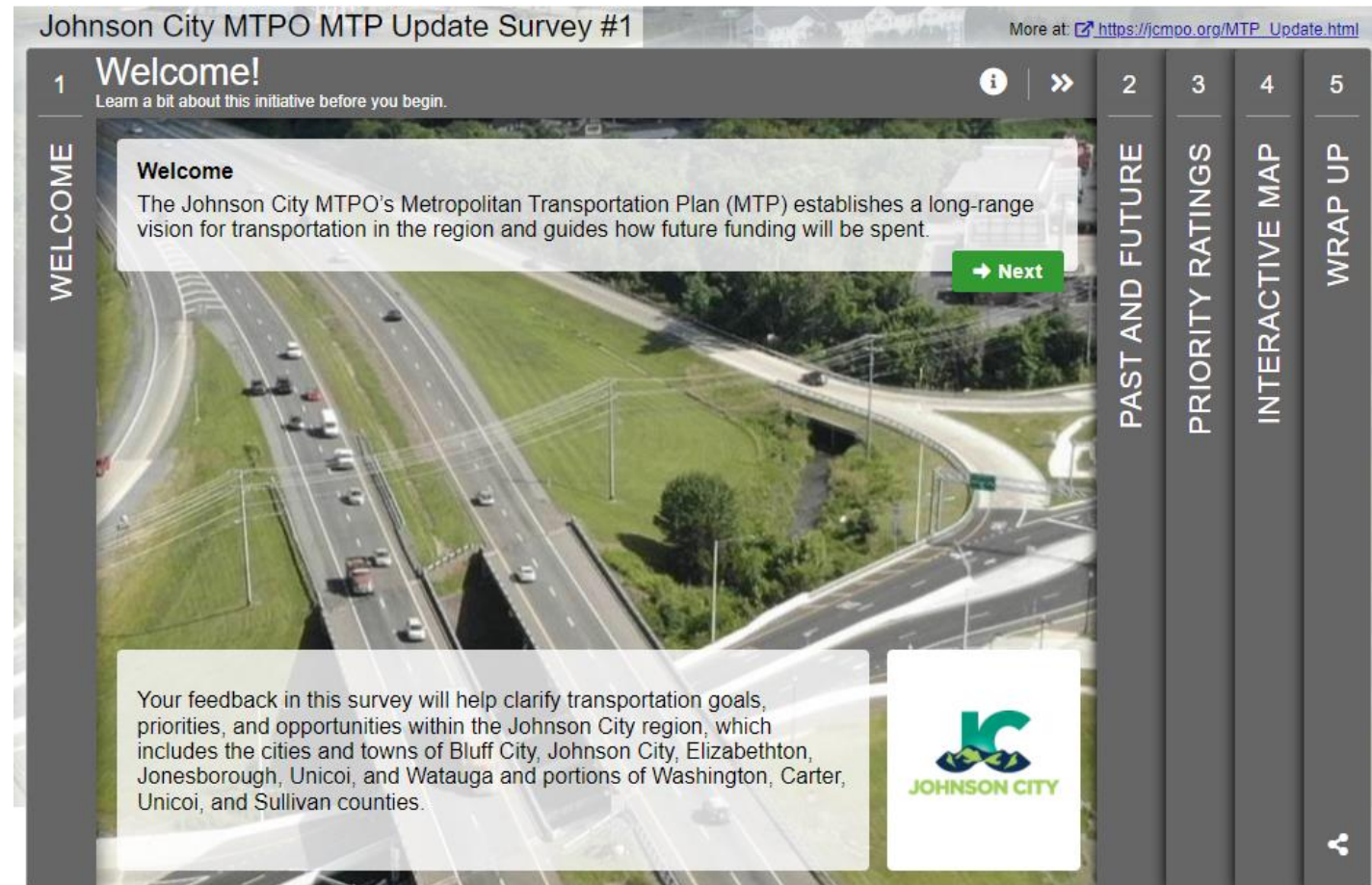
• Project Schedule

		2021	2022												2023	
		Dec	Jan	Feb	March	April	May	June	July	August	Sept	Oct	Nov	Dec	Jan	Feb
Phase 1	Task 1 - Project Management	■	■	■	■	■	■	■	■	■	■	■	■	■	■	■
Phase 2	Task 2 - MTP Goals and Objectives		■													
	Task 3 - Data Collection															
	Task 4 - Initial List of Projects			■												
	Task 5 - Bicycle and Pedestrian Facilities			■												
	Task 6 - Travel Demand Model Update								■							
	Task 7 - Performance Framework/Deficiencies and Needs					■	■		■							
Phase 3	Task 8 - Financial Model				■											
	Task 9 - Project Cost Estimates					■										
	Task 10 - Operations and Maintenance Costs					■										
Phase 4	Task 11 - Title VI and Environmental Justice Analysis							■								
	Task 12 - Public Participation		■ EB ■ Public			■ EB ■ Public	■ EB								■ Public ■ EB	
Phase 5	Task 13 - Draft Plan and Executive Summary							■								
	Task 14 - Deliverables							■ MTPO		■ TDOT			■ FHWA/FTA			■

- MTPO Meeting
- Public/Executive Board Meeting
- Agency Review Milestones
- Deliverable/Milestones

Draft Public and Stakeholder Engagement Plan

- Public meetings (3)
- Stakeholder meetings (5)
- MTPO Executive Board Meetings (4)
- Online Engagement
- Targeted Outreach
- Media Outreach



Draft Public and Stakeholder Engagement Plan

Round #1

January 2022

- MTPO EB Meeting #1
- Website goes live
- Media releases

February 2022

- Public Meeting #1
- Stakeholder Meetings

Round #2

April 2022

- MTPO EB Meeting #2
- Website updates
- Media releases

May 2022

- Public Meeting #2
- Stakeholder Meetings

June 2022

- MTPO EB Meeting #3

Round #3

January 2023

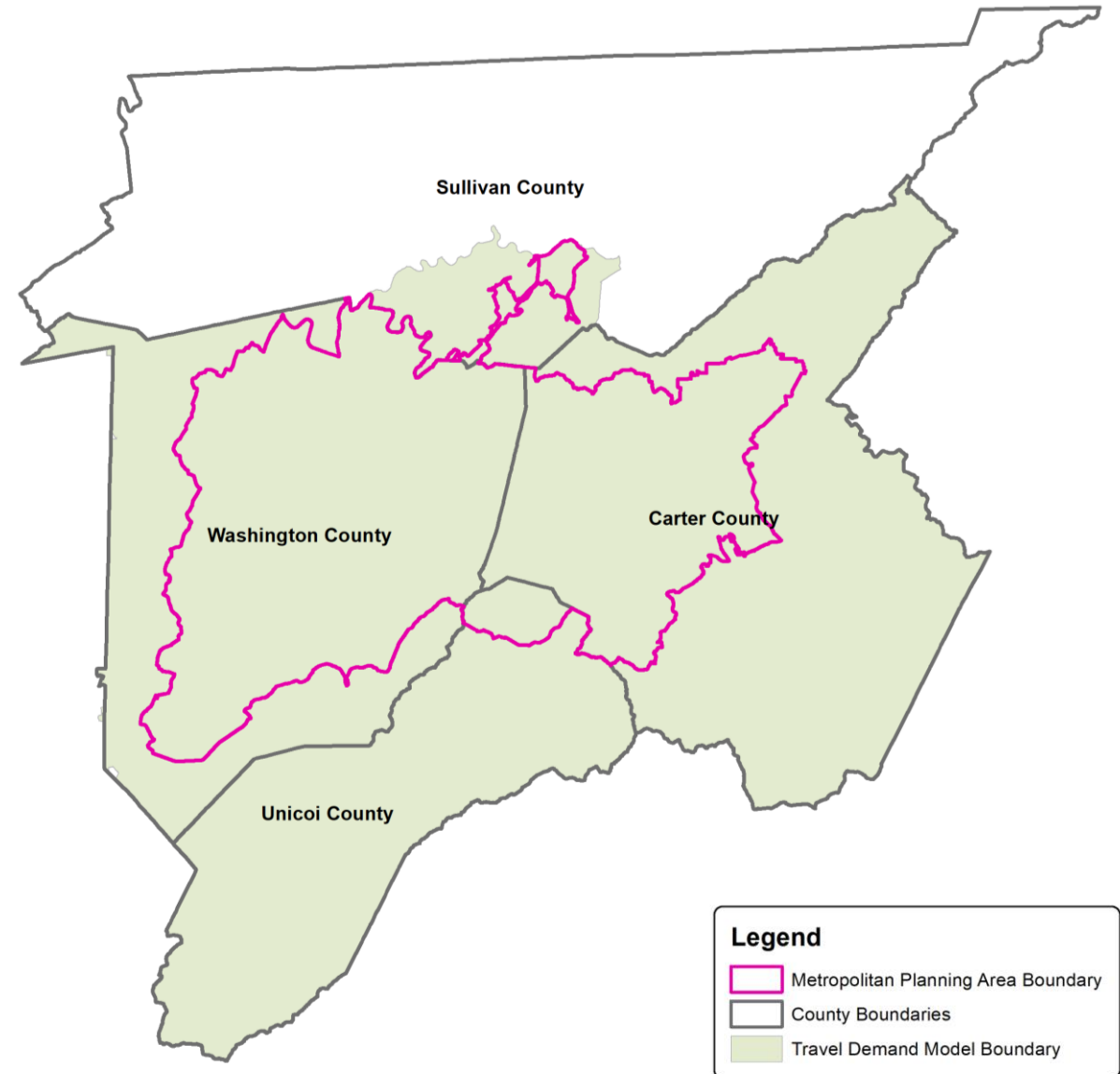
- Media Releases
- Public Meeting #3

February 2023

- MTPO EB Meeting #4

Draft Population and Employment Control Totals

- Study Area - Two geographies:
 - Inside MTPO Area
 - Outside MTPO Area and Inside Modeling Area
- Note: Sullivan County population numbers refer to the portion of the county within the modeling area, not the entire county.



Data Sources

- 2020 Decennial Census – Census block level county populations
- 2019 Woods & Poole – County level population and employment projections
- 2020 InfoGroup – Base year employment totals by employment type
 - Agricultural, manufacturing, retail, office, service, government
- 2020 Statewide Travel Demand Model (SWTDM) – County level population projections
- University of Tennessee Boyd Center – County level population projections

Base Year (2020) County Populations

County	County Population 2020	Population Inside MPA 2020	Percent Population Inside MPA 2020	Population Outside MPA & Inside Model 2020
Carter County	56,356	46,201	82.0%	10,155
Sullivan County	158,163	5,204	3.3%	6,013*
Unicoi County	17,928	1,865	10.4%	16,063
Washington County	133,001	117,999	88.7%	15,002
Total	365,448	171,269	46.9%	47,233

**For Sullivan County population, 'Outside the MPA' refers to the population contained within Sullivan County and the MTPO modeling area, which is a subset of the entire county's population.*

- Source: 2020 Decennial Census
- Tagged blocks as “inside” or “outside” the MPA and determined population percentages

Future Year (2050) Forecast Comparison

County	2020	2050 County Totals				2020	2050 MPA Totals	
	Census County Population	SWTDM Growth Forecast	W&P Direct Forecast	UT Forecast	W&P Growth Forecast	Population Inside MPA	SWTDM Growth Forecast	W&P Growth Forecast
Carter County	56,356	67,434	56,907	47,948	56,446	46,201	55,283	46,275
Sullivan County	158,163	178,286	160,687	155,706	160,565	5,204	5,866	5,283
Unicoi County	17,928	19,035	17,920	17,889	18,074	1,865	1,980	1,880
Washington County	133,001	190,226	146,161	153,908	149,122	117,999	168,769	132,302
Total	365,448	454,981	381,675	375,451	384,207	171,269	231,899	132,302

- To align with TDOT growth projections, recommend using SWTDM growth rates to project population growth in the Johnson City region

Future Year (2050) Population Projections

County	Census County Population 2020	County Population 2050	MPA	Population 2050	Population Change 2020-2050	Percent Change 2020-2050	Annual Percent Change 2020-2050	County Total Change
Carter County	56,356	67,434	Inside Outside	55,283 12,151	9,082 1,996	19.7% 19.7%	0.7% 0.7%	11,078
Sullivan County	158,163	178,286	Inside Outside	5,866 6,778	662 765	12.7% 12.7%	0.4% 0.4%	1,427
Unicoi County	17,928	19,035	Inside Outside	1,980 17,055	115 992	6.2% 6.2%	0.2% 0.2%	1,107
Washington County	133,001	190,226	Inside Outside	168,769 21,457	50,770 6,455	43.0% 43.0%	1.4% 1.4%	57,225
Total	365,448	454,981	Inside Outside	231,899 57,441	60,630 10,208	35.4% 21.6%	1.2% 0.7%	70,838

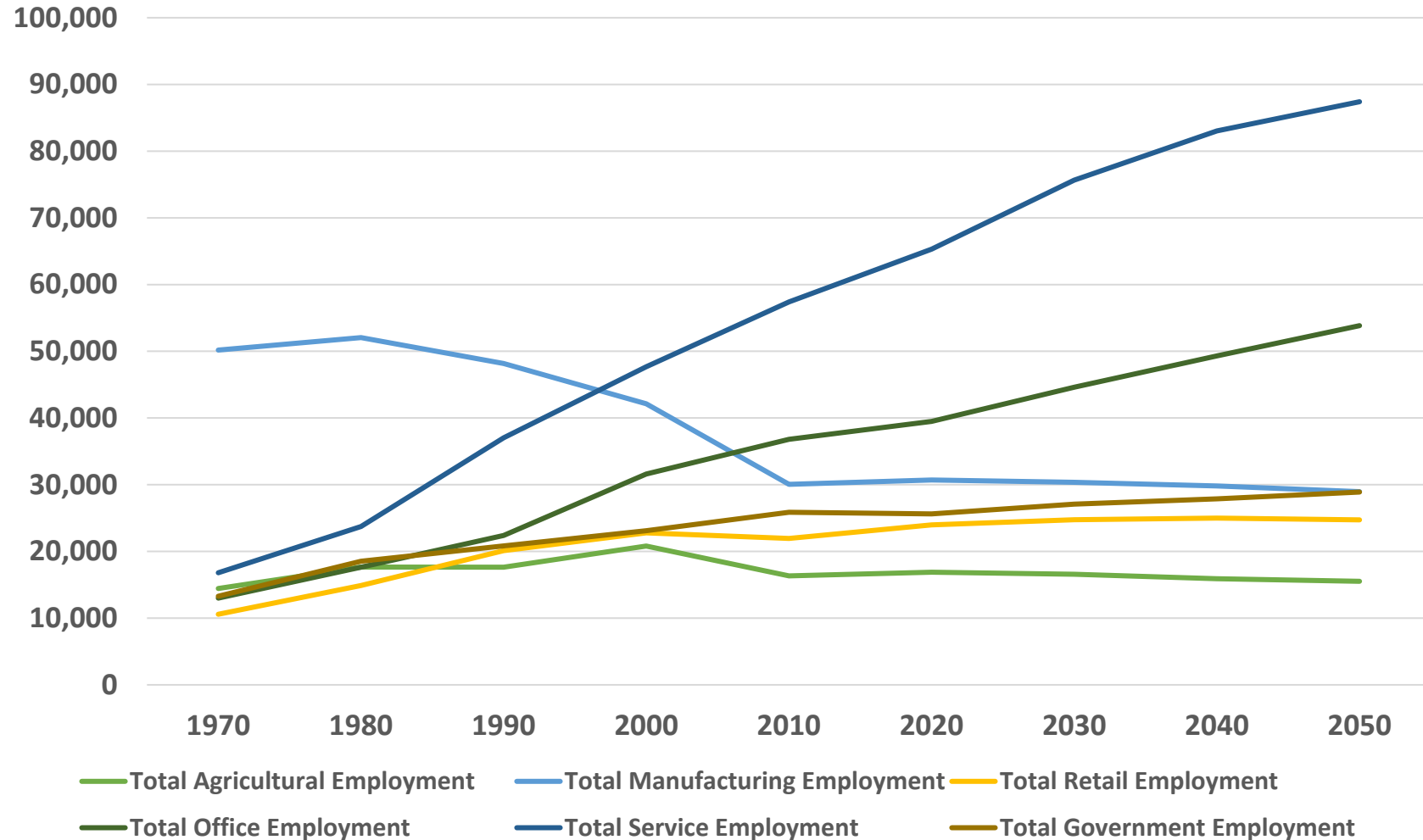
**For Sullivan County population, 'Outside the MPA' refers to the population contained within Sullivan County and the MTPO modeling area, which is a subset of the entire county's population.*

- Source: 2020 Decennial Census, 2050 SWTDM growth rates

Base Year (2020) County Employment by Type, Inside MPA

County	Agricultural	Government	Manufacturing	Office	Retail	Service	County Total	Percent of MPA Total
Carter County	1,158	1,310	1,673	1,254	1,692	5,567	12,654	17.8%
Sullivan County	103	103	210	216	347	587	1,566	2.2%
Unicoi County	19	---	3	3	8	25	58	0.1%
Washington County	1,798	2,149	6,720	6,821	9,885	29,381	56,754	79.9%
MPA Total	3,078	3,562	8,606	8,294	11,932	35,560	71,032	100.0%
Percent of MPA Total	4.3%	5.0%	12.1%	11.7%	16.8%	50.1%	100.0%	

Employment Trends by Type, 1970-2050



Future Year (2050) County Employment by Type, Inside MPA

County	Agricultural	Government	Manufacturing	Office	Retail	Service	County Total	Percent of MPA Total
Carter County	1,128	1,539	1,594	1,742	1,879	6,920	14,802	16.6%
Sullivan County	96	114	211	288	357	716	1,782	2.0%
Unicoi County	16	---	3	4	9	29	61	0.1%
Washington County	1,575	2,458	5,333	9,537	9,942	43,741	72,586	81.3%
MPA Total	2,815	4,111	7,141	11,571	12,187	51,406	89,231	100.0%
Percent of MPA Total	3.2%	4.6%	8.0%	13.0%	13.7%	57.6%	100.0%	

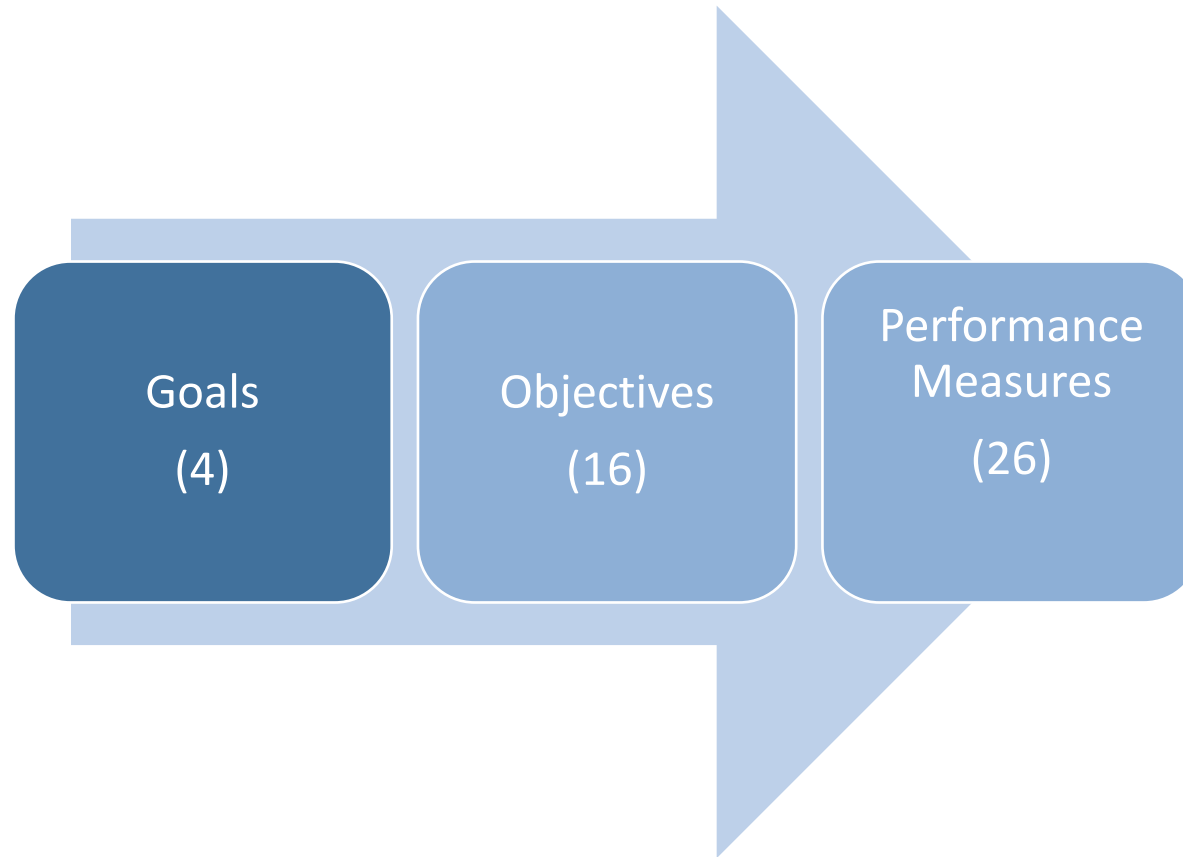
Summary of Recommended Population Controls

County	2020 Total Population Inside MPA	2050 Total Population Inside MPA	Population Change 2020-2050
Carter County	46,201	55,283	9,082
Sullivan County	5,204	5,866	662
Unicoi County	1,865	1,980	115
Washington County	117,999	168,769	50,770
Total	171,269	231,899	60,630

Summary of Recommended Employment Controls

County	2020 Total Employment Inside MPA	2050 Total Employment Inside MPA	Employment Change 2020-2050
Carter County	12,654	14,803	2,149
Sullivan County	1,566	1,782	216
Unicoi County	58	61	3
Washington County	56,754	72,586	15,832
Total	71,032	89,232	18,200

Draft Goals, Objectives & Performance Measures



Draft Goals, Objectives & Performance Measures

- **Goal #1: Improve Safety and Security throughout the MTPO Area Transportation System**
 - Reduce crash rates for serious injuries and fatalities
 - Reduce the number of secondary traffic crashes
 - Establish initiatives (projects and programs) to improve the safety and security of vulnerable roadway users (e.g., pedestrians, cyclists, transit riders, and the young and old)
 - Encourage partnerships with other transportation and non-transportation agencies to enhance transportation safety and security
 - Increase the transportation system's resilience to climate change and extreme weather

Draft Goals, Objectives & Performance Measures

- **Goal #2: Mitigate Traffic Congestion along Major Routes in the MTPO Area**
 - Reduce travel delays between major attractions in the MTPO study area
 - Seek cost-effective management solutions and new technologies as a means of addressing congestion, reducing transportation delay, improving travel time reliability, and improving system operations
 - Increase transit and other transportation demand management strategies
 - Enhance the flow of raw materials and manufactured products

Draft Goals, Objectives & Performance Measures

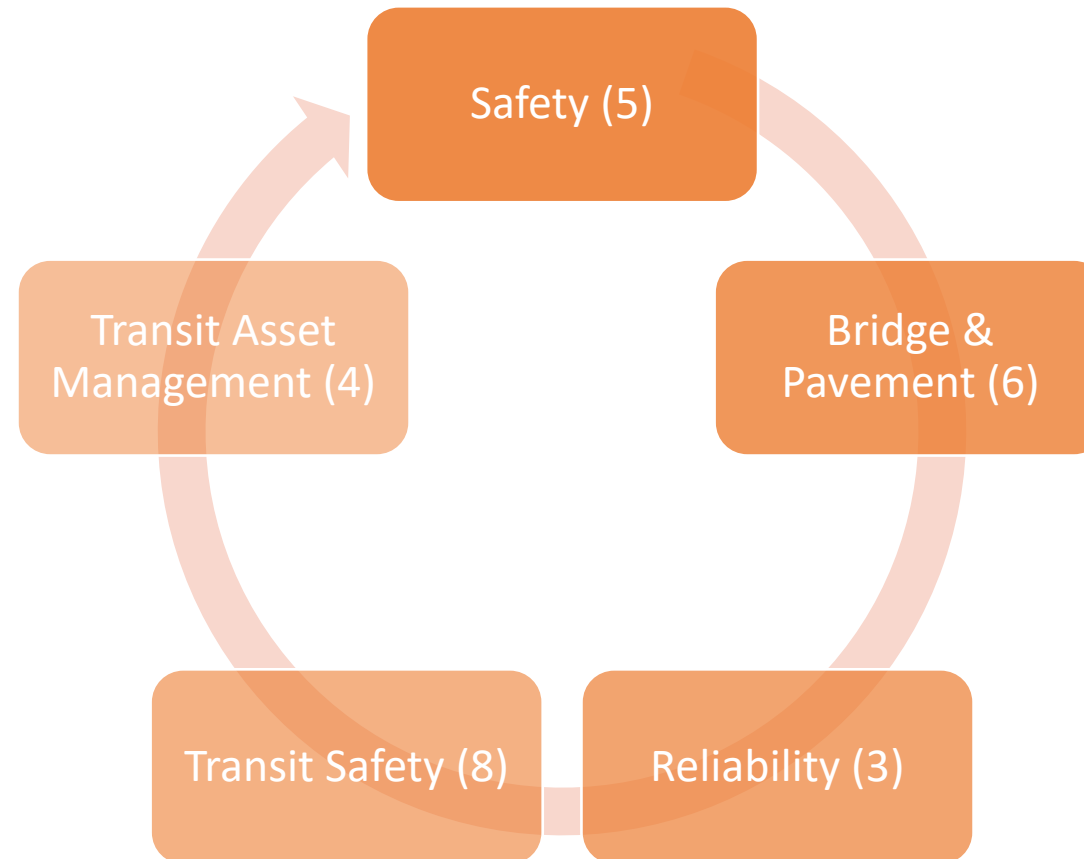
- **Goal #3: Promote Sustainable Economic Growth and Livability by Enhancing the MTPO Area Transportation System**
 - Maintain what we have and take a “state of good repair” approach to the community’s transportation assets
 - Invest in the integration and connectivity of the transportation system, across and between modes, for people and freight, to support sustainable economic development and improve quality of life
 - Promote alternative forms of transportation (such as walking, biking, and transit)
 - Support transportation investments that minimize adverse impacts of surface transportation to historical, social, cultural, and natural environments, including stormwater impacts, and reduce transportation impacts on air-quality

Draft Goals, Objectives & Performance Measures

- **Goal #4: Enhance Regional Access to and from the MTPO Area**
 - Maintain and improve access to regional areas outside of the MTPO area
 - Support transportation investments and policies that work to create jobs and improve access for people, tourism, places, and goods while embracing access management and corridor management strategies that preserve the long-term functionality of a roadway's capacity and safety
 - Strategically target transportation investments to areas supportive of and conducive to growth and redevelopment initiatives

Draft Goals, Objectives & Performance Measures

- **Performance Measures**



Next Steps

- Public Meeting #1 / Stakeholder Meetings (February/March)
- Ongoing Technical Analysis
 - Initial List of Projects (T4)
 - Bicycle/Pedestrian Facilities (T5)
 - Travel Demand Model Update (T6)
 - Performance Framework/Deficiencies and Needs (T7)
 - Financial Model (T8)